

Gardner Denver

ENVIROAIRE T75-315 & TVS110-315 | 100-400 HP
OIL-FREE TWO-STAGE FIXED & VARIABLE SPEED ROTARY SCREW COMPRESSOR

EnviroAire T/TVS



Eliminate the Risk

Guaranteed 100% Oil-Free

The EnviroAire T/TVS features an Oil-Free design. There is no oil used anywhere in the compression process, which eliminates the risk of product contamination due to oil carryover. The EnviroAire T/TVS meets ISO 8573-1 Class 0, the most stringent class. It is also certified Silicone-Free which is critical for applications such as automotive and pharmaceutical.

| CLASS | CONCENTRATION TOTAL OIL (AEROSOL, LIQUID, VAPOR) MG/M ³ |
|-------|--|
| 0 | As specified by the equipment user or supplier and more stringent than class 1 |
| 1 | ≤ 0.01 |
| 2 | ≤ 0.1 |
| 3 | ≤ 1 |
| 4 | ≤ 5 |

Silicone-Free

Silicone contamination in compressed air systems cause problems across a wide range of industries such as electronics, pharmaceuticals and automotive. Costly product spoilage, re-work and production downtime can result from this contamination.

For example, a high quality paint finish is essential to the automotive industry. Blisters, cracking, craters and a loss of adhesion are all symptoms of silicone contamination.

- 100% silicone-free, guaranteed
- Specifically designed for use in pure-air critical applications such as the automotive industry
- Avoids contamination and provides the highest air quality standards
- Independently tested and certified



PureAir

ISO CLASS: ZERO PLUS SILICONE FREE

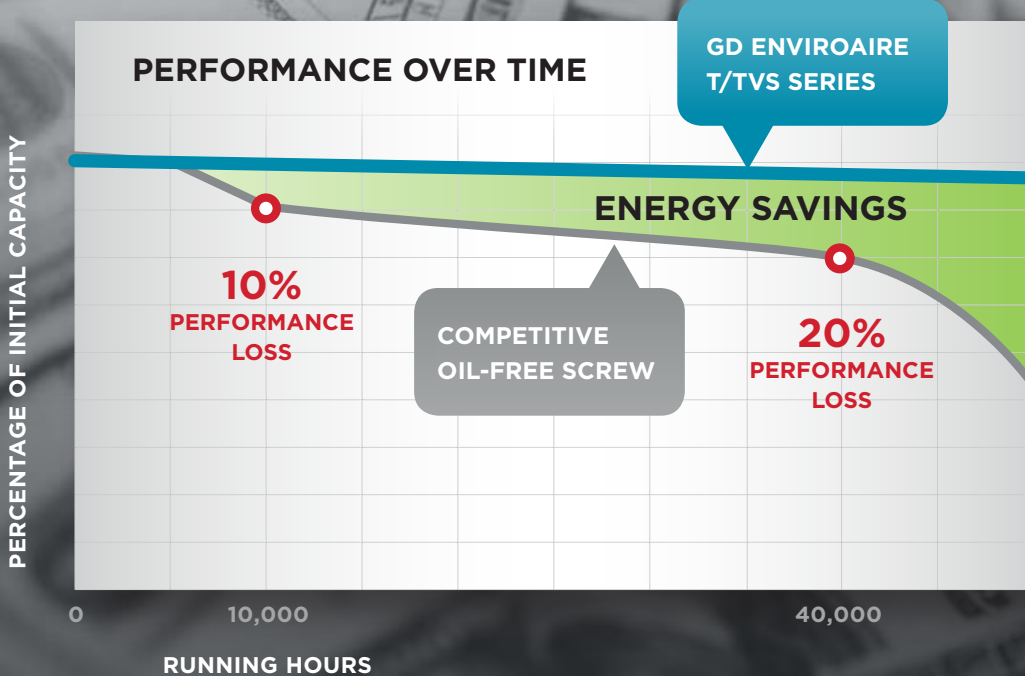
Energy Saving Performance Delivered

Gardner Denver EnviroAire T/TVS Series compressors utilize state-of-the-art design and manufacturing to ensure very tight tolerances thereby reducing loss. In addition, the rotors and housing are covered with a unique hard coating that ensures long-lasting performance. This combination results in little or no performance decay even after 40,000 hours of operation, saving thousands in utility expenses.

\$35,000

SAVINGS PER YEAR

The EnviroAire T/TVS Series can offer a 20% or more reduction on operating costs, when compared to a competitive dry screw compressor. For example, for a 400 HP compressor, that could amount to \$35k or more in electricity savings per year!



The Preferred Choice for Optimum Performance

Efficient Two-Stage Airend Design

Designed and manufactured by Gardner Denver to deliver maximum flow reliably and efficiently.

Reliable Cooling System

- A dedicated closed-loop cooling system for the airend, ensures a constant internal temperature level and near isothermal compression, which increases the overall longevity of the airend. This unique feature guarantees efficient operation and generates a stable and low discharge temperature.
- The EnviroAire T/TVS Series is available as air-cooled or water-cooled.

High Quality Electric Motors

Premium efficiency TEFC motors ensure high reliability.

Up to 113°F (45°C) Ambient Capability

Ensures reliability and trouble-free operation through efficient heat dissipation.

All Connections from One Side

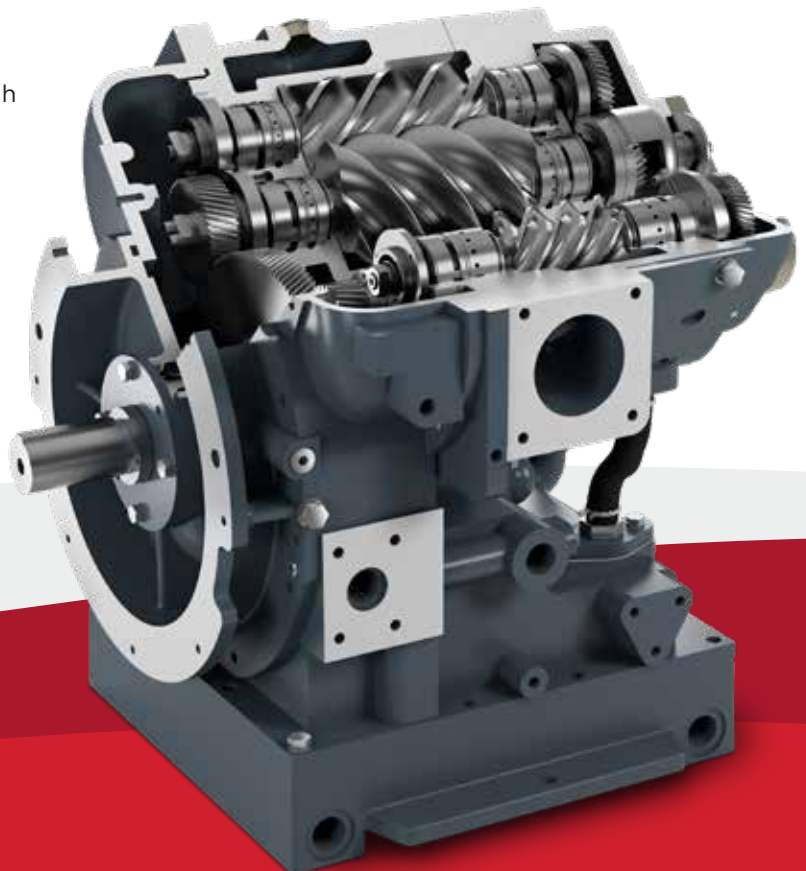
The modern design provides all connections on one side of the unit, such as cooling air inlet, customer network connection, electrical connection and condensate connection.

Easy Installation

- Gardner Denver saves you money from the very beginning—starting with transportation to your site. The unit's compact size allows you to move it through standard industrial double doors.
- Its small footprint minimizes the floor plan usage allowing you to maximize production space.
- The compressors require no special foundation and ducting is simple.

Dedicated Air Inlet

A separate air inlet designed specifically for the EnviroAire T/TVS 165-315 compressors, provides the coolest possible air which ensures the reliability and performance of the air end.



Reduce the Cost of Ownership

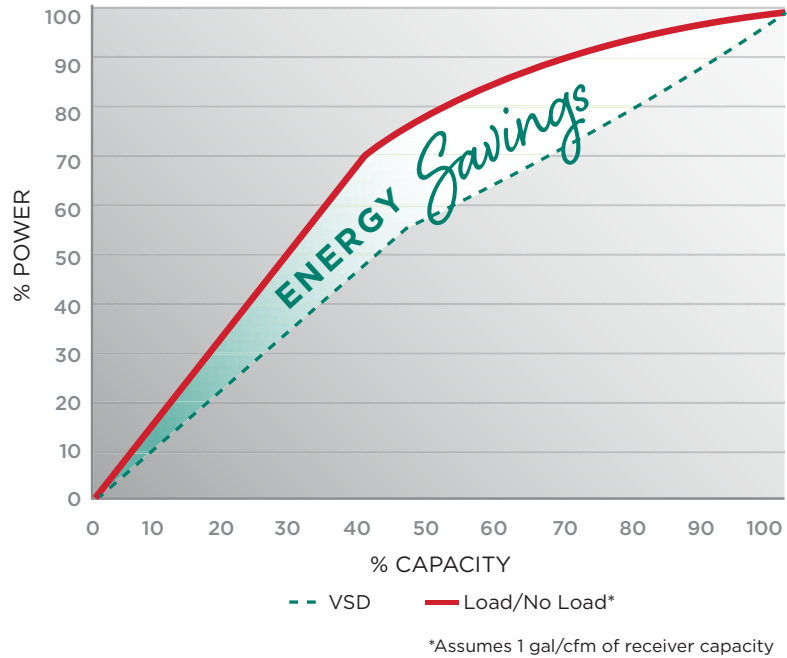
Minimize Your Energy Consumption

The largest cost component of a compressor during its lifetime is the power required to operate it.

Perfect Response to Your Individual Air Demand

Variable speed compressors from Gardner Denver can efficiently and reliably handle varying air demands. The right variable speed compressor in the right application delivers significant energy savings while providing a stable air supply at constant pressure.

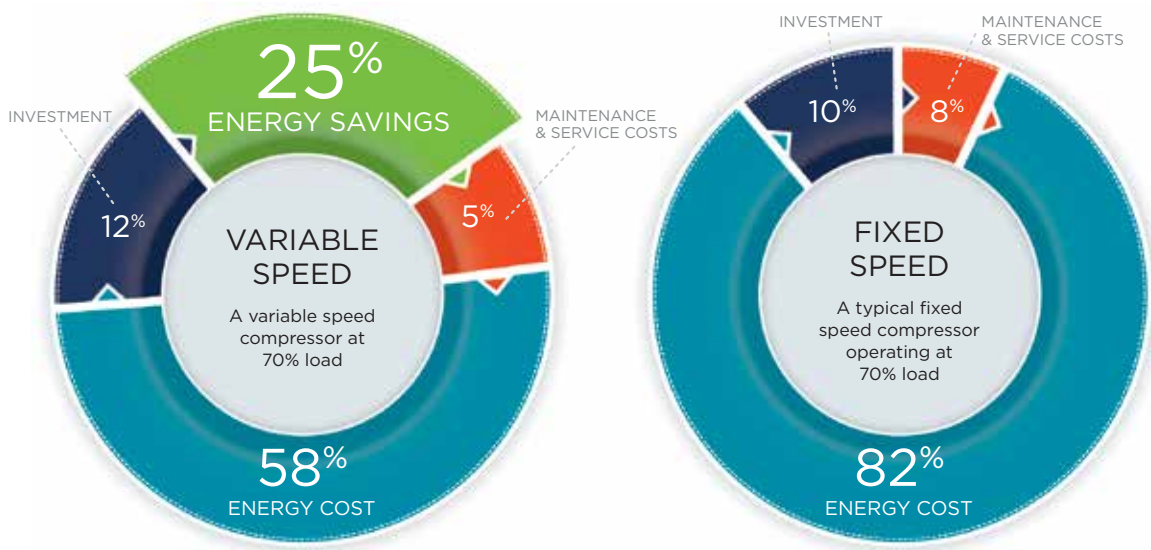
ENERGY SAVINGS with a Variable Speed Drive



COST OF OWNERSHIP

Variable Speed vs. Fixed Speed

Using a variable speed compressor can easily **save 25% on energy costs** by supplying just the right amount of compressed air to do the job and no more.



Reduced Wear & Tear

Superb Flexibility Comes Standard with the TVS Series

With a wide capacity range, the TVS Series features the market's quickest and widest response to air demand changes.

Your benefits during varying air demand:

- Reduced wear and tear on inlet and discharge valve components
- No shock bearing loads for the airend
- Minimized pulsating load (full load pressure/off load pressure) for all pressurised components within compressor package

THE TVS SERIES
FEATURES THE MARKET'S
QUICKEST & WIDEST
RESPONSE TO
CHANGING AIR DEMAND



GD Pilot TS: State-of-the-Art Control

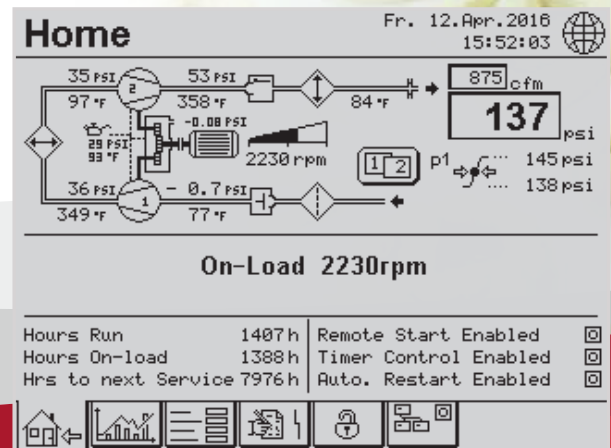
The “GD Pilot TS” with its 5.7” high resolution touch screen display is extremely user-friendly and easy to navigate. All functions are clearly structured in five main menus and are intuitively visual.

The multilingual “GD Pilot TS” control system ensures reliable operation and protects your investment by continuously monitoring the operational parameters, which is essential for reducing your operating costs.

With the ability to display detailed system analysis in the form of trend diagrams and graphs, operating parameters can be precisely set to maximize the efficiency.

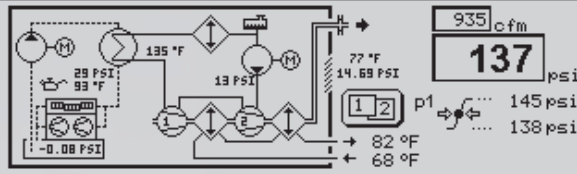
Features & Functions

- Compressor status
- Line/network pressure
- Motor speed (variable speed)
- On load hours/total hours run & average volume flow
- Weekly average volume flow
- Ambient pressure & temperature
- Inlet/outlet pressure and temperature at both stages
- Optional base-load sequencing for up to four compressors
- Real time clock-allows pre-setting of compressor starting/stopping
- Second pressure setting
- Auto restart after power failure
- Remote control via programmable inputs
- RS485 Modbus RTU standard
- Optional SD card for data logging



Home

Fr. 12. Apr. 2016
15:52:10



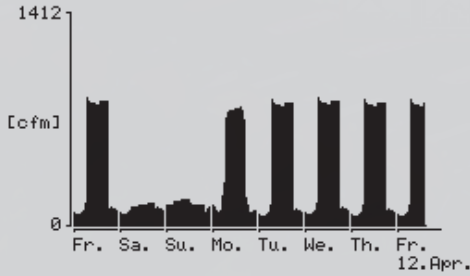
On-Load 235°

Trends

Trends

Statistics Weekly Profile

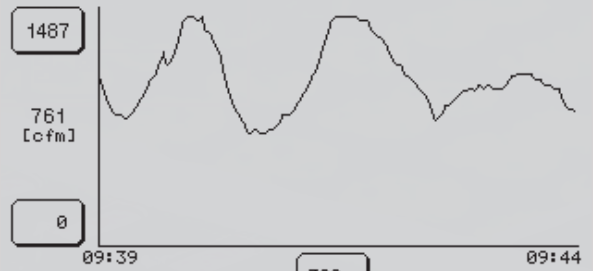
Average Volume Flow



1487 h Remc
1388 h Time
Ice 7976 h Autc



Volume Flow



PureAir
ISO CLASS: ZERO PLUS SILICONE FREE

**Gardner
Denver**

ENVIROAIRE T 315

EnviroAire Technical Data

FIXED SPEED MACHINES, 50 & 60 HZ

| MODEL | COOLING METHOD | DRIVE MOTOR | | NOMINAL PRESSURE | | FAD* | | NOISE LEVEL** DB(A) | WEIGHT | | DIMENSIONS L x W x H IN. (MM) |
|-------|----------------|-------------|-----|------------------|-----|------|---------------------|------------------------|--------|-------|---|
| | | HP | KW | PSIG | BAR | ACFM | M ³ /MIN | | LBS | KG | |
| T75 | Air | 100 | 75 | 116 | 8 | 437 | 12.37 | 76 | 6,665 | 3,023 | 102.2 x 68.7 x 78.8 (2597 x 1744 x 2001) |
| | Water | 100 | 75 | 145 | 10 | 383 | 10.85 | 75 | 7,105 | 3,223 | |
| T90 | Air | 125 | 90 | 116 | 8 | 562 | 15.91 | 77 | 7,125 | 3,223 | |
| | Water | 125 | 90 | 145 | 10 | 464 | 13.14 | 76 | 7,546 | 3,423 | |
| T110 | Air | 150 | 110 | 116 | 8 | 670 | 18.97 | 78 | 7,198 | 3,265 | |
| | Water | 150 | 110 | 145 | 10 | 596 | 16.88 | 78 | 7,639 | 3,465 | |
| T132 | Air | 180 | 132 | 116 | 8 | 797 | 22.57 | 78 | 8,007 | 3,632 | |
| | Water | 180 | 132 | 145 | 10 | 741 | 20.98 | 77 | 8,007 | 3,632 | |
| T160 | Air | 215 | 160 | 116 | 8 | N/A | N/A | N/A | 8,034 | 3,644 | |
| | Water | 215 | 160 | 145 | 10 | 795 | 22.51 | 79 | 8,475 | 3,844 | |
| T165 | Air | 215 | 160 | 125 | 8.6 | 988 | 27.98 | 81 | 11,387 | 5,165 | |
| | Water | 215 | 160 | 145 | 10 | 875 | 24.78 | 83 | 10,395 | 4,715 | |
| T200 | Air | 270 | 200 | 125 | 8.6 | 1236 | 35.00 | 84 | 12,147 | 5,510 | |
| | Water | 270 | 200 | 145 | 10 | 1080 | 30.58 | 85 | 11,155 | 5,060 | |
| T250 | Air | 335 | 250 | 125 | 8.6 | 1525 | 43.18 | 85 | 12,489 | 5,665 | |
| | Water | 335 | 250 | 145 | 10 | 1366 | 38.68 | 86 | 11,497 | 5,215 | |
| T315 | Air | 420 | 315 | 125 | 8.6 | 1705 | 48.28 | 85 | 13,162 | 5,970 | |
| | Water | 420 | 315 | 145 | 10 | 1585 | 44.88 | 86 | 12,170 | 5,520 | |

* Data measured and stated in accordance with ISO1217 4th Edition Annex C and E at the following conditions:
Air Intake Pressure: 1 bar a / 14.5 psi, Air Intake Temperature: 20°C / 68°F, Humidity: 0% (dry)

** Measured in free field conditions in accordance with the ISO 2151, tolerance ± 3 dB(A)

VARIABLE SPEED MACHINES, 50 & 60 HZ

| MODEL | COOLING METHOD | DRIVE MOTOR | | NOMINAL PRESSURE | | FAD* | | NOISE LEVEL** | WEIGHT | | DIMENSIONS L x W x H IN. (MM) |
|--------|----------------|-------------|-----|------------------|-----|------|---------------------|---------------|--------|-------|---------------------------------------|
| | | HP | KW | PSIG | BAR | ACFM | M ³ /MIN | | LBS | KG | |
| TVS110 | Air | 150 | 110 | 116 | 8 | 682 | 19.31 | 78 | 7,227 | 3,476 | 130 x 79 x 86 (3300 x 1994 x 2190) |
| | Water | 150 | 110 | 145 | 10 | 613 | 17.36 | 75 | 7,668 | 3,478 | |
| TVS132 | Air | 180 | 132 | 116 | 8 | 800 | 22.65 | 79 | 7,663 | 3,476 | |
| | Water | 180 | 132 | 145 | 10 | 736 | 20.84 | 77 | 8,104 | 3,676 | |
| TVS160 | Air | 215 | 160 | 116 | 8 | N/A | N/A | N/A | 8,131 | 3,688 | |
| | Water | 215 | 160 | 145 | 10 | 819 | 23.19 | 79 | 8,572 | 3,888 | |
| TVS200 | Air | 270 | 200 | 125 | 8.6 | 1246 | 35.28 | 84 | 12,258 | 5,560 | |
| | Water | 270 | 200 | 145 | 10 | 1087 | 30.78 | 81 | 11,266 | 5,060 | |
| TVS250 | Air | 335 | 250 | 125 | 8.6 | 1536 | 43.49 | 85 | 12,599 | 5,715 | |
| | Water | 335 | 250 | 145 | 10 | 1377 | 38.99 | 82 | 11,607 | 5,215 | |
| TVS315 | Air | 420 | 315 | 125 | 8.6 | 1716 | 48.59 | 86 | 13,272 | 6,020 | |
| | Water | 420 | 315 | 145 | 10 | 1585 | 44.88 | 82 | 12,280 | 5,520 | |

* Data measured and stated in accordance with ISO1217 4th Edition Annex C and E at the following conditions:
Air Intake Pressure: 1 bar a / 14.5 psi, Air Intake Temperature: 20°C / 68°F, Humidity: 0% (dry)

** Measured in free field conditions in accordance with the ISO 2151, tolerance ± 3 dB(A)

Best Warranty in the Industry

Experience Peace of Mind

The engineering philosophy of Gardner Denver ensures long-lasting, reliable equipment. Our simple, but bold warranty programs demonstrate our belief in the quality found in Gardner Denver compressors.

Our standard warranty ensures that you have peace of mind when it comes to your system's operation. For added protection, take advantage of our 5-year extended airend warranty program. Simply stated, it's the best in the industry.

The leader in every market we serve
by continuously improving all business processes
with a focus on innovation and velocity

**Gardner
Denver**[®]


Gardner Denver, Inc.

1800 Gardner Expressway
Quincy, IL 62305
866-440-6241

www.gardnerdenver.com/gdproducts



©2018 Gardner Denver, Inc. Printed in U.S.A.
GS-ENVIROAIRE-T-TVS 5th Ed. 9/18

 Please recycle after use.